

Cornwall
Community
Foundation

OUR IMPACT

20 years of impact
Positive change for one and all



UKCOMMUNITY
FOUNDATIONS
GIVING FOR LOCAL GOOD

Cornwall Community Foundation (CCF) connects people who want to help Cornish communities, with grassroots projects that need their support.

Since 2003, we have awarded close to **£17 million in grants**, supporting more than **5,000 local organisations**. In 2022 alone, **£2.3 million** was awarded to strengthen communities across Cornwall and the Isles of Scilly.

Generous individual and business donors invest in endowed and immediate impact funds, generating resources to change lives. This enables CCF to assess and award targeted grants to the local grassroots community groups that need it most.

We want Cornwall and the Isles of Scilly to be a great place for everyone to live – a place where people work together to address disadvantage and build strong, resilient communities.

To achieve this we aim to INSPIRE.

Local philanthropy –

helping donors support causes in Cornwall and the Isles of Scilly that make a difference.

Community investment –

making measurable impact by providing grants to support local community groups, especially those helping the most marginalised and vulnerable.

Community leadership –

working with others to develop a more sustainable voluntary sector by creating partnerships and building confidence and capability.

Looking forward to the

Welcome to this Impact Report in the year of the Foundation's 20th anniversary. We are extremely proud of everything that Cornwall Community Foundation has achieved over the past 20 years. With the help of our donors and supporters, we have distributed close to **£17 million** to great causes doing exceptional work in our local communities. It is a privilege to have been able to support so many wonderful organisations across the Duchy in this time, including those from our inception in 2003 who are still thriving thanks to the dedication and passion of the people involved.

Despite the challenges of recent years, it has been remarkable and reassuring to see so many charitable organisations across the Duchy demonstrate great strength, determination and resilience in their continued efforts to support their local communities. Of course, none of this would be possible without the commitment of the many people who have donated through us, volunteered with us, and our team who have worked passionately to evaluate and allocate grants. Your support over the last 20 years has helped us make the Foundation what it is today.

This report tells our shared story, a story of generous and warm-hearted people, doing what they can to make positive change in the places, and for the people, they care about.

NEXT 20 YEARS



Kim Conchie, DL, FRSA,
Chair of the Board of Trustees

Jane Hartley, DL,
retired Chair of the Board of Trustees

Contents

- 3 Welcome letter
- 4 Our impact over the first 20 years
- 5 Timeline
- 8 Vital Signs
- 10 Our measurement of the impact we make
- 11 Grants
- 12 Making communities stronger
- 14 Boosting life chances through learning and education
- 16 Reducing climate change and improving our environment
- 18 Empowering people to get active and healthy
- 20 Encouraging the arts, culture and heritage
- 22 Increasing health and wellbeing
- 24 Thank you to our fundholders



OUR IMPACT

over the first 20 years

In 1998, a small group of visionary people in Cornwall met to discuss ways of closing the all-too apparent gap between struggling Cornish communities and readily available funds. Five years later Cornwall Community Foundation (CCF) was created.

By the end of its first full year, the CCF held **£307,000** in funds, including **£29,000** in endowment. To put this into context, we are currently responsible for **£12.6 million** in funds, including more than **£10 million** in endowment.

As a result, close to **£17 million** has been granted to Cornish communities to date, supporting over **6,000** grass-roots organisations.

This exciting growth is down to both the vision and stewardship of our voluntary Trustees, the hard work of our Foundation staff, and the generosity and enthusiasm of our dedicated volunteers.

The cornerstone of it all, though, is the philanthropy of our donors and fund holders who truly enable us to help communities throughout Cornwall and the Isles of Scilly become more resilient and confident.

“The extraordinary impact we have made across our first 20 years has only been possible thanks to the magnificent generosity of our fund holders, donors and supporters. On behalf of Cornwall Community Foundation, I would like to say a huge ‘thank you’. You really have changed lives.”

Colonel Edward Bolitho, OBE, Lord Lieutenant of Cornwall

TIMELINE

- 2003** The Cornwall Community Foundation was founded by the late **Lady Mary Holborow DCVO** and **Michael Galsworthy CVO CBE FRAGS DL**
- CCF secured **The Local Network Fund** through UKCF, distributing nearly **£1.5 million** over six years
- 2004** **The Friends scheme launched** to enable people to make regular donations to CCF and keep up to date with our work
- 2006** HRH **The Duchess of Cornwall** became our Patron
- 2007** More than **£2 million** was distributed during the first four years
- Bishop’s Fund** was launched, now called the Crisis Fund
- Lord Lieutenant’s Fund for Youth** launched, now known as **Young and Talented Cornwall**
- “ I have been supporting the inspiring and very motivating **Young & Talented Cornwall Fund** for the last seven years. The fund helps Cornwall’s brightest prospects who so often lack the means to pursue their dreams fully, awarding in excess of **£350,000** since 2005. The fund is in extremely safe hands at Cornwall Community Foundation – the grants team administers the fund and the application process with professionalism, efficiency, yet empathy.”*
- Kate Holborow** DL, Young & Talented Cornwall, The Lord Lieutenant’s Fund
- 2008** **The Business Club launched** – local businesses commit to support the communities they operate in
- 2010** **Cornwall Club launched** – a fund for supporters with a love for Cornwall but living outside of the Duchy
- 2012** **Surviving Winter launched**, now an annual campaign, to date it has raised over **£600,000** for vulnerable people across the Duchy struggling during the winter
- CCF took on the management of our first renewable energy grant programme, the **Goonhilly Wind Farm Fund**, originally subcontracted by Cornwall Light and Power and subsequently REG Windpower and recently RES

“ The CCF is one of the most significant bodies in Cornwall which has had an almost incalculable effect on our local economy and brought comfort and help to so many men, women and children across the county who would otherwise be impoverished, in hardship and lacking opportunity.

The help whether in kind or financial that the CCF has brought to virtually every sector of our local economy has been and most certainly still is extraordinary and I am proud to maintain my association.”

Michael Galsworthy CVO CBE FRAGS DL

“ As a founding member of the Business Club, Coodes is incredibly proud of our long-standing association with Cornwall Community Foundation. The CCF plays a vital role in assisting some of the most disadvantaged communities and improving people’s lives. We are delighted to have supported their efforts over the years, helping to make a real difference to those in need and making a positive change – something that aligns with our own values as a firm. We look forward to our continued partnership and working together in the future.”

Peter Lamble, Chair of Coodes, founding member of the Business Club

2013 CCF distributed the first grants from **East Langford, Manor, Howton and Trenouth Solar Farms**

Community First match funding initiative launched

2014 First event for supporters in London is hosted at Tate Britain

“ When I first decided to give something back to Cornwall I wasn't sure how to do so, particularly since I spend more than half of my time out of the county. Now I understand what the Foundation actually does, how they know where the real needs are, how the team evaluates all the grant applications and how professional the follow-up is, I wouldn't give money to Cornwall any other way.”

Tom Van Oss, Chair of London Committee

CCF's Emergency storm fund raised over **£183,000** for coastal communities impacted by the winter storms

2017 CCF's first **Vital Signs report** was published – a detailed analysis of social measures across the Duchy

2018 Patron HRH The Duchess of Cornwall (now Her Majesty The Queen) joined us to celebrate 15 years of CCF



More than **£8 million** so far awarded to communities across Cornwall and the Isles of Scilly

CCF's **Community Outreach** programme is launched

“ We have had the great joy and privilege of working with CCF for over 13 years. The work that their small, knowledgeable and dedicated team do throughout our wonderful Duchy is hugely impressive and measurable.

This has enabled, with confidence and much pride, our family business to grant to well over 150 worthy recipients during this period and we know that each and every group will benefit, and put to good use, such much-needed funds.

It never ceases to surprise me how often a relatively modest grant or donation can have such a positive, profound and transformational effect. It is a wonderful feeling being able to support our wider community.”

Mark Mitchell, Chair of Cornwall Group

2020 Cornwall Women's Fund is launched

The CCF mobilises to launch the **Cornwall Coronavirus Emergency appeal** – funding groups at the frontline supporting their communities

CCF distributes more than **£1.6 million** of funding within the year

2021 Cornwall's Social Enterprise Fund was launched to support social enterprises to creating employment and improving skills leading to the development of services

“ It has been a delight to work with Cornwall Community Foundation. Their team has been invaluable in helping identify social enterprises that can be scaled to meet the needs of local communities. We will continue our partnership to try and achieve long term positive change.”

Peter Harrison, Fundholder, Cornwall's Social Enterprise fund

CCF distributed a milestone of over **£2.4 million grants** within the year

2022 Kim Conchie takes over as Chair of the Board of Trustees

The **Cost of Living Crisis Fund** launched to help people affected by the rising costs of living

2023 Our first London-based gala dinner was held, raising over **£220,000**

CCF celebrates 20 years

“ The support that we have received from CCF has been literally life-saving for so many of our people. Obviously, the financial help has been massively important, but it is also the advice we receive that helps us so much and was a key factor in our winning the Queen's Award.”

Pat Walton, Manager Oasis Centre

“ Working in collaboration with the Cornwall Community Foundation helps us to help so many people who are in crisis. From stopping evictions, helping to replace new furniture ruined by unfit housing conditions to helping with money for electricity to provide heating, hot water and cooking facilities

Here at Wadebridge Food-bank & StoreHouse our strap line is “Restoring Dignity – Reviving Hope”.

CCF Your help is invaluable. Thank you from all of us.”


Jacqui White MBE,
Manager Wadebridge Foodbank




VITAL SIGNS Cornwall in 2022




Vital statistics


 In 2021 **26.5%** of the Cornish population earned under the real living wage (17.1% across the United Kingdom).


 **20.3%** of Cornwall's workforce is self-employed compared to **13.5%** for the UK. **49%** of self-employed people earn less than the minimum wage.


 Cornwall fares as 'average' for healthy living indicators, with life expectancy figures marginally higher than the UK.

 In 2021 a full-time worker in Cornwall and Isles of Scilly earned **£20,628**, **79%** of the UK gross median annual salary.

 There are approximately **4,500** voluntary, community and social enterprise (VCSE) organisations in Cornwall and the Isles of Scilly.

 Cornwall has the highest number of unpaid carers (**12%** of the population), with carers often being family members.

 The cost of heating an average Cornish home is around **20%** higher than homes in the rest of England.

 **One-third** of the adult population and half of children and young people in Cornwall are not meeting national physical activity guidelines.


 Housing is a contentious issue and it was one of the most passionately discussed in our community consultations.

 **22,000** households are on the social housing waiting list.


We are very fortunate to call Cornwall and the Isles of Scilly our home. Our beautiful landscape, deep-rooted legends, warm Cornish hospitality and cultural heritage are world renowned. However, poverty and rural isolation, identified by our first Vital Signs research in 2017, are very real issues for many people in our communities.

In 2022 we published our second Vital Signs paper, with research jointly carried out with The University of Exeter. The report highlights the challenges that our communities face, and how local giving can make a huge difference by addressing the urgent, and often overlooked, areas of need.


Vital Signs 2022 is informing our philanthropy services and our grant-making, and is a benchmark for our future impact.


 Only **11%** of housing stock in Cornwall is social housing, compared to an average of **18%** across England.

 In September 2022 the river Fal was announced as the most polluted site in the UK.

 In 2022 almost all exam grades for GCSE and A level across all subjects in Cornwall were lower than the rest of England.

 Cornish culture is thriving and is visible through heritage, language, food, community involvement and strong attachment to place.


 Within the state system our teachers are the lowest paid across England.


 Air quality is at the low end of the moderate range, but water quality is a persistent and growing concern.


 **261,085 tonnes** of waste was collected in 2019–2020 but just **33.3%** was reused, recycled or composted.

 Cornwall has **70** museums and over **250** festivals.


CCF survey

 **93%** of respondents recognised there is insufficient, affordable local housing.


 **67%** of survey respondents stated that traveling to arts, culture and heritage events is difficult.

 **88%** considered that Cornwall is impacted by climate change.

 **63%** stated that they do not recycle as much as they could in their area.

 **87%** of people recognised that there is a wide income gap across Cornwall.

 **76%** of people stated that they cannot always get to see a health professional.

 **84%** stated that there are too many homes unoccupied for part of the year.

 **76%** of people would recommend Cornwall as a great place to live and work.

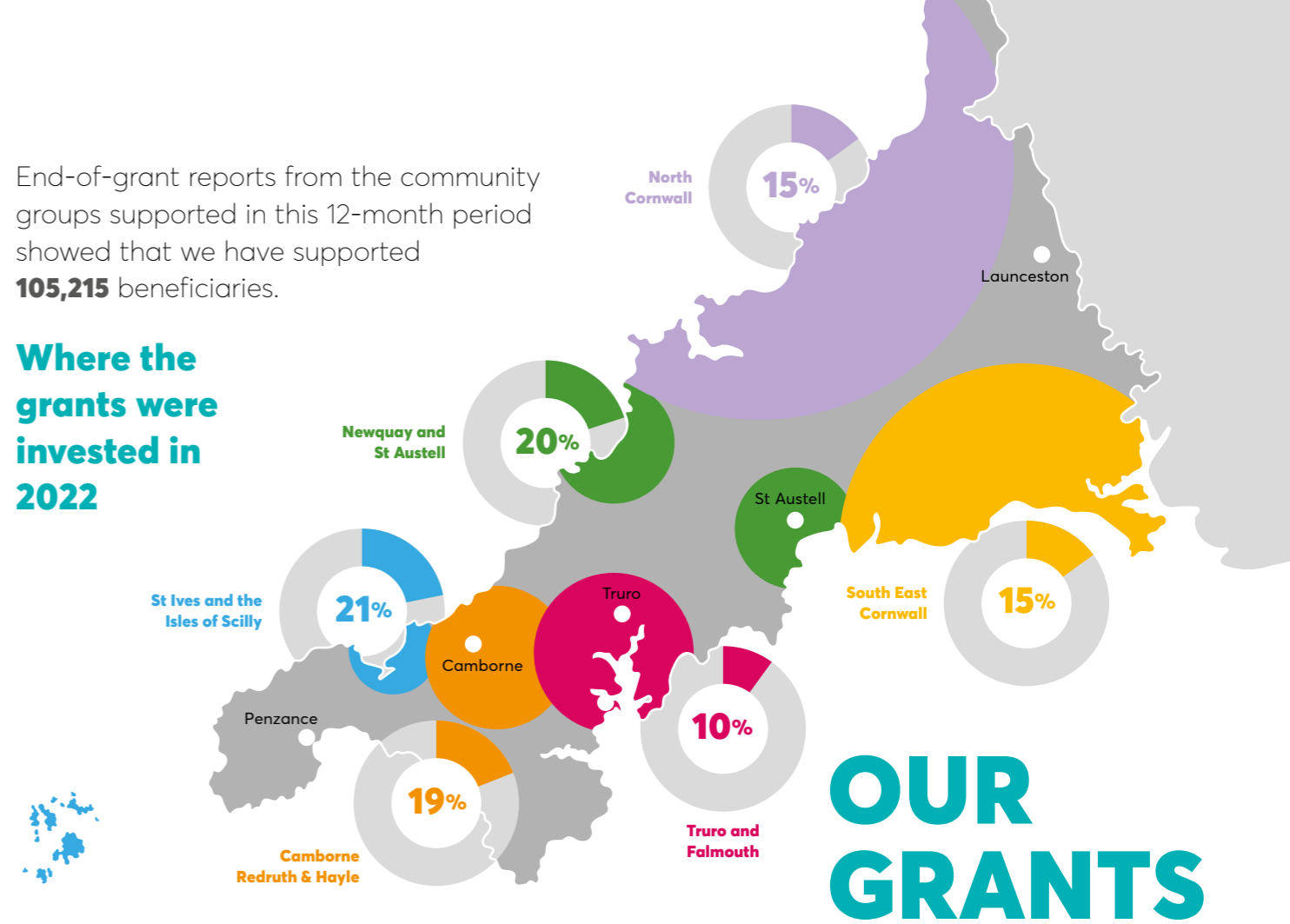
MEASURING THE IMPACT WE MAKE

Over the following pages we are delighted to share with you highlights of the social impact and value that donations and grants are making to communities and people across Cornwall and the Isles of Scilly. The information is based on completed end-of-grant reports received from funded groups and charities in the previous year.

The impact measurement tool that we use enables CCF, and community foundations across the country, to capture and demonstrate the value of the broad range of grants given out. Alongside data, stories of change and case studies bring to life the impact of funding. The themes, outcomes and indicators of the framework enable us to capture the kind of change that groups are achieving, to track transformation, and communicate this to current and potential donors, and the wider community.

End-of-grant reports from the community groups supported in this 12-month period showed that we have supported **105,215** beneficiaries.

Where the grants were invested in 2022



OUR GRANTS

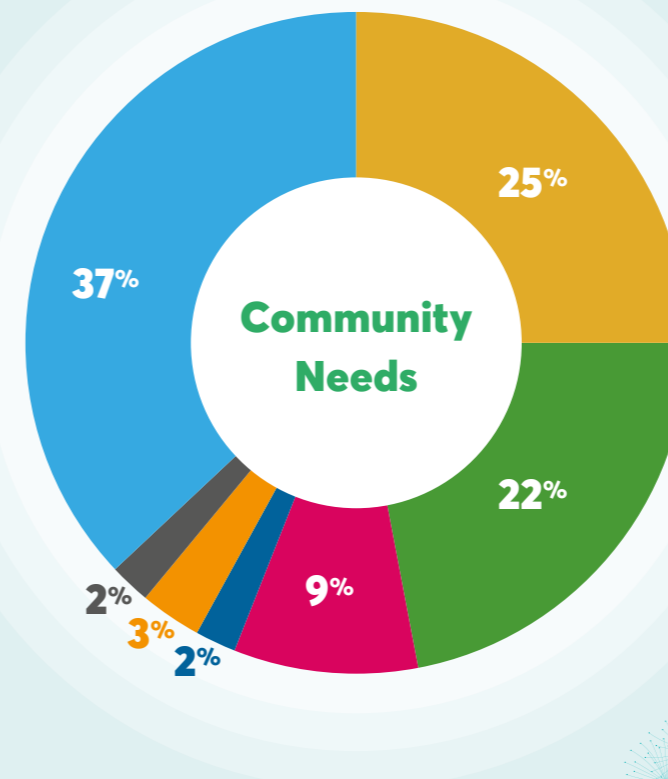
The Sustainable Development Goals we are focusing on:



UN Sustainable Development Goals – think globally, act locally

Developed in 2015 by the United Nations, the 17 Sustainable Development Goals (SDGs) provide a framework to achieve a better and more sustainable future for all by 2030. We are now in the 'decade of action' and community foundations are vital players in achieving the Goals in the UK. Alongside our own impact assessment framework, we use these Goals to support our engagement with supporters and applicants. They also help us tackle the root causes of poverty and unite us to make a positive difference to both people and the planet. The aims of the 17 SDGs are broad, so we have narrowed our focus to the nine that align best with our grant making. To think global we must act local, trusting local people to provide solutions to local problems. Although local charities and community organisations may be small in size, collectively their work plays a significant role in working towards meeting the Goals. When you support our work, you're investing in something bigger; a global vision that starts with local, grassroots change.

How the grants were invested

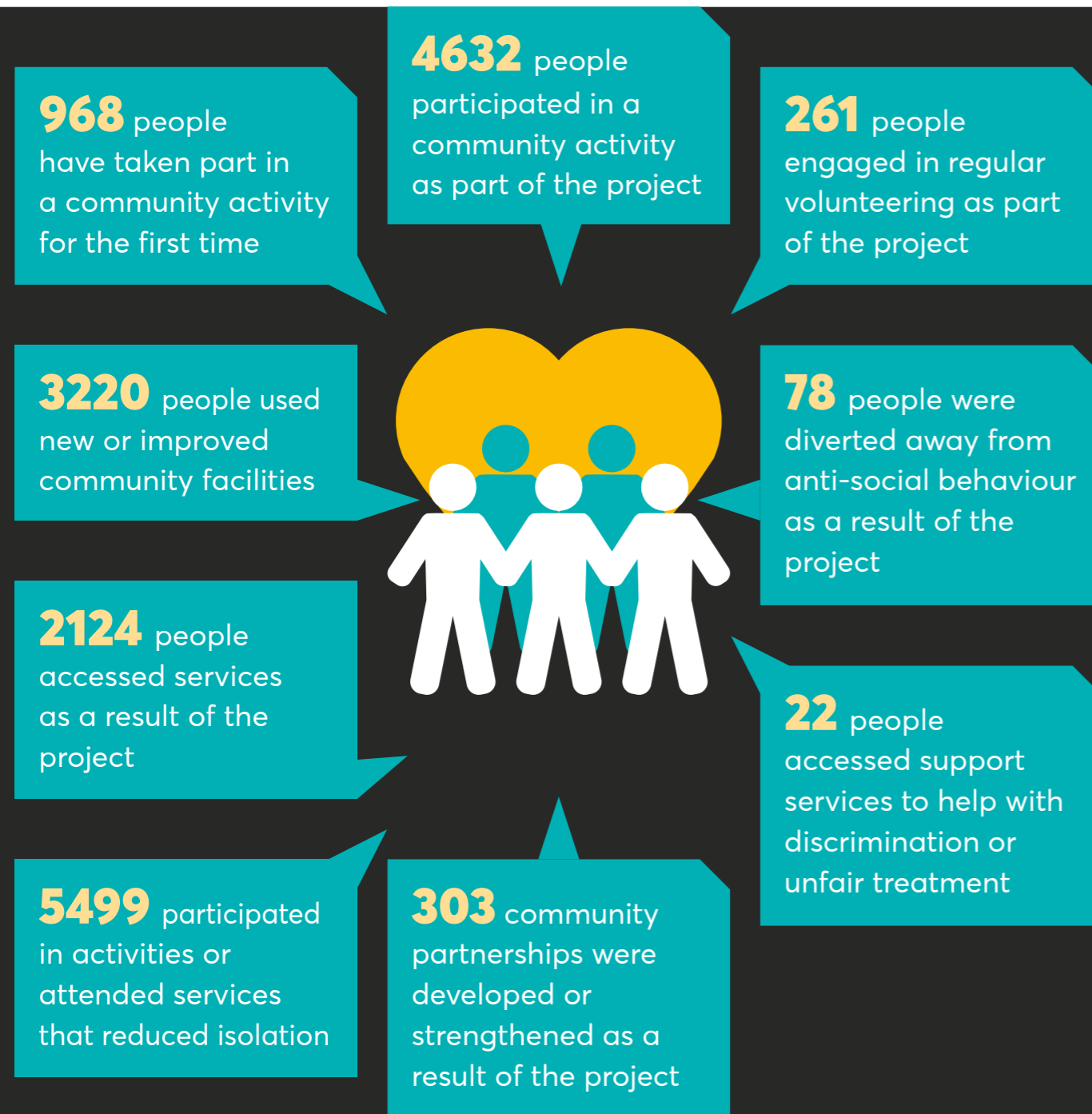


- Making communities stronger
- Supporting people who are struggling
- Boosting life-chances through learning and employment
- Reducing climate change and improving the environment
- Empowering people to get active and healthy
- Encouraging the arts, culture and heritage
- Increasing health & wellness



Making **COMMUNITIES STRONGER**

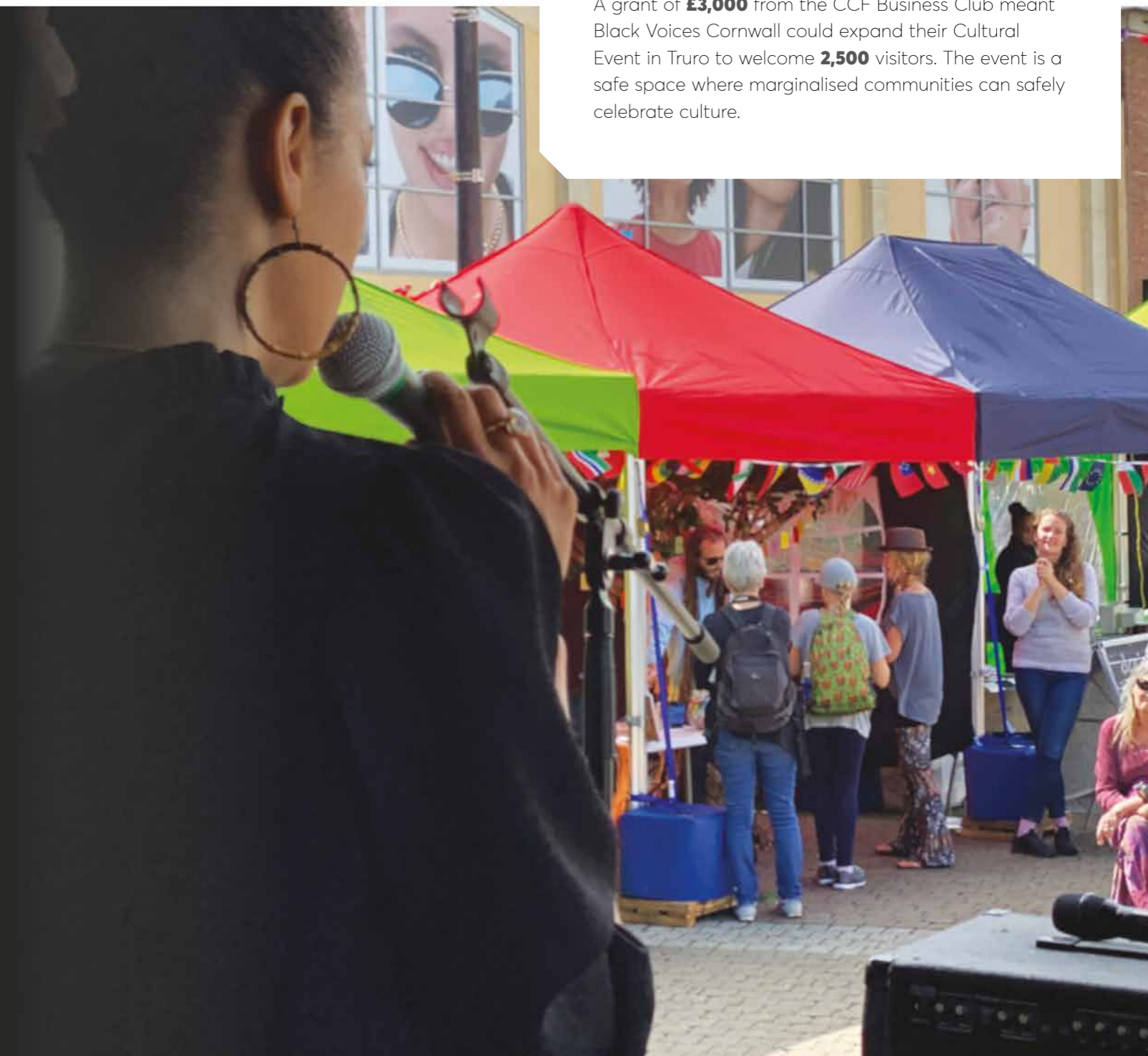
Community benefit outcomes



Black Voices Cornwall

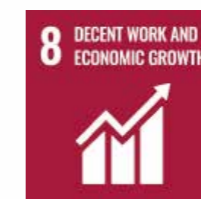
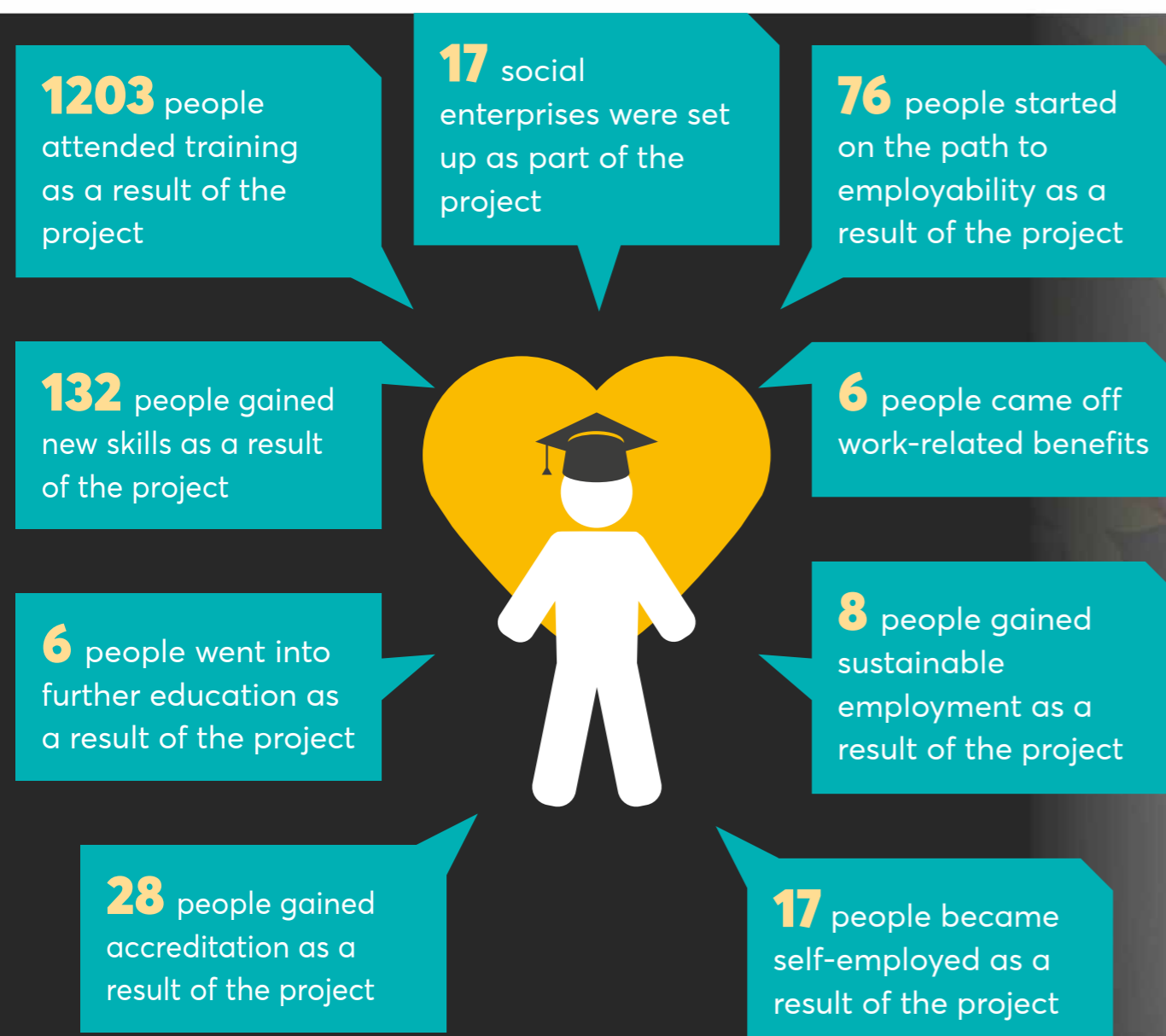
Cornish charity, Black Voices Cornwall, exists to enable Cornwall to become an actively anti-racist region, by improving awareness and empowerment through communication, education and unification. The charity runs an acclaimed training programme focusing on diversity and inclusion for businesses and public sector organisations, including for the CCF team.

A grant of **£3,000** from the CCF Business Club meant Black Voices Cornwall could expand their Cultural Event in Truro to welcome **2,500** visitors. The event is a safe space where marginalised communities can safely celebrate culture.



Boosting life chances through **LEARNING & EDUCATION**

Community benefit outcomes



Trelya, Penzance

The 'Being Me' Project at TRELYA addresses the negative impacts of social media. Thanks to the grant of **£4,464** from Young Minds First, Trelya has been able to support groups of young people with its 'Being Me' emotional wellbeing project.

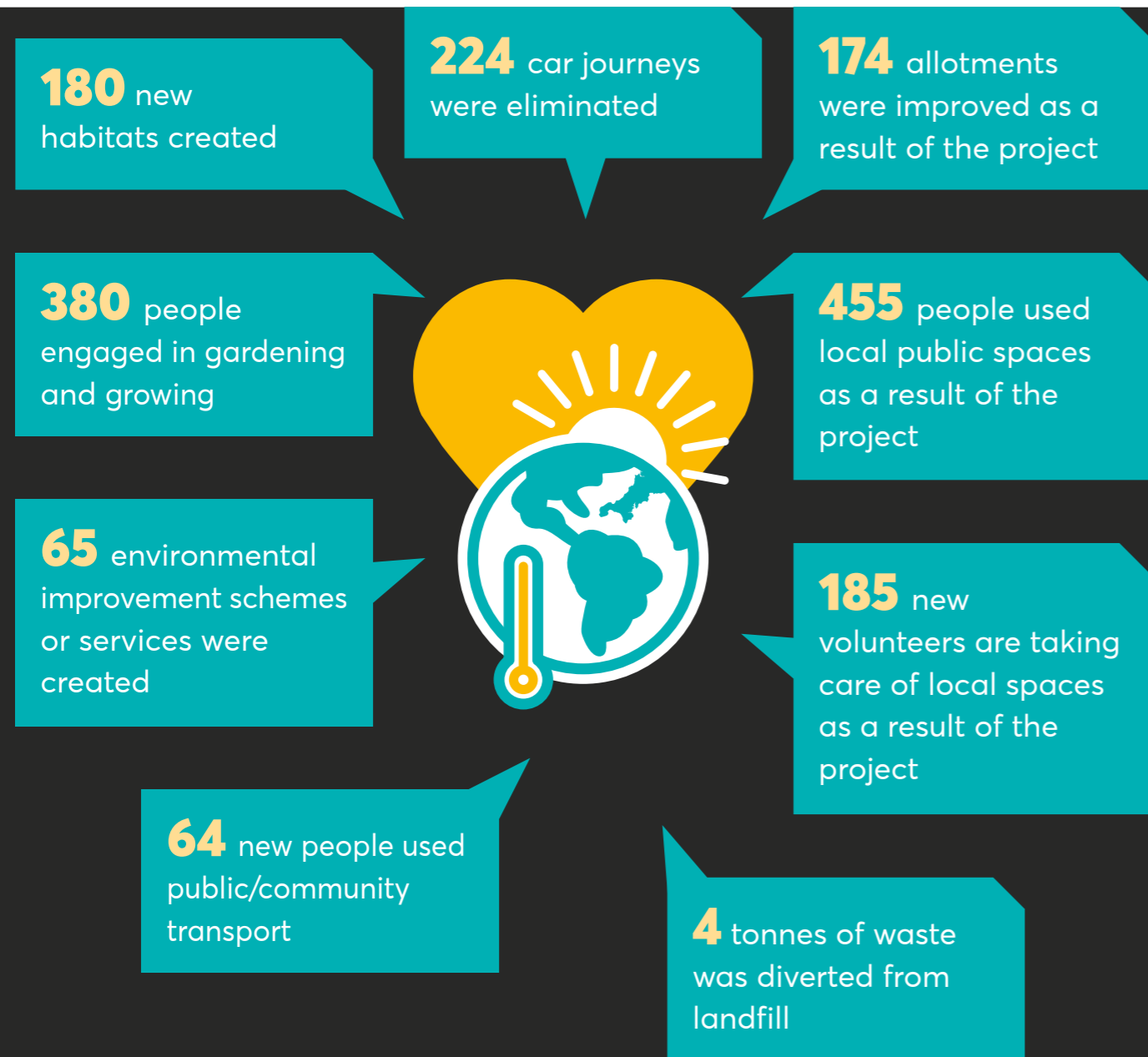
Trelya is based on Treneere Estate – the second most deprived community in Cornwall and in the top 1% most income-deprived communities in the entire country.

Trelya works to improve the life outcomes for disadvantaged and socially excluded children. It works with those facing the greatest challenges, barriers and difficulties. 'Being Me' is an emotional well-being project that uses an early intervention and intergenerational approach to reduce the negative impact of body image on young people's emotional well-being. 35 young people were supported and all reported improved physical, mental and emotional health. All participants undertook activities that promote healthy lifestyles.



Reducing **CLIMATE CHANGE** and improving our **ENVIRONMENT**

Community benefit outcomes



2 Minute Foundation, North Cornwall

The 2 Minute Foundation, based at Bude, offers a unique learning and activity experience that empowers generations to take action against single-use plastic and make positive environmental choices. They encourage everyone to clean up the planet, 2 minutes at a time. They do this through direct action of beach cleaning/litter picking, education and advice on simple swaps and solutions for a more sustainable lifestyle.

Grants of **£1,000** from the Bude Fund and **£2,000** from the North Cornwall Fund helped the 2 Minute Foundation to build The Crab Shack at Crooklets Beach, Bude as a classroom resource to support their educational programmes for young people.

“ Support from The North Cornwall Fund and Cornwall Community Foundation has made this possible, together working towards a world without litter or plastic pollution, where nature thrives.”

Sarah Shaw - 2 Minute Foundation

“ I like beach school because we socialise away from our phones.”

13-year-old boy



Empowering people to **GET ACTIVE & HEALTHY**

Community benefit outcomes

1948 hours of new sport, leisure and exercise activities provided by the project

131 groups provided health-related activities

101 new activities available as part of the project

2171 hours of sport, leisure and exercise activities provided by the project

3336 people are taking part in sport, leisure and exercise activities as part of the project

775 new people taking part in sport, leisure and exercise as part of the project

2347 hours of activity available as part of the project



The Wave Project

Based in Bude, Polzeath, Newquay, Gwithian and St Ives, The Wave Project improves the mental health and well-being of young people through the power of surf therapy. In September 2010, a group of 20 young people sat on the beach at Watergate Bay, Cornwall, for a surfing lesson. It was the start of The Wave Project – the world's first 'surf therapy' course funded by a government health service.

During this year, The Wave Project received two grants from CCF. The Community Fund awarded a grant of **£5,000** to fund ten young people from Penwith struggling with their mental health to take part in surf therapy courses at Gwithian. These young people were referred by local professionals, including social workers, doctors and school staff and surfed with 1:1 mentorship from our trained volunteers. A grant of **£35,000** from the Cost of Living Crisis Fund was used to provide financial sustainability to the Wave Project in Mid Cornwall. The grant funded part of the Project Coordinator's salary, volunteer support and safeguarding.

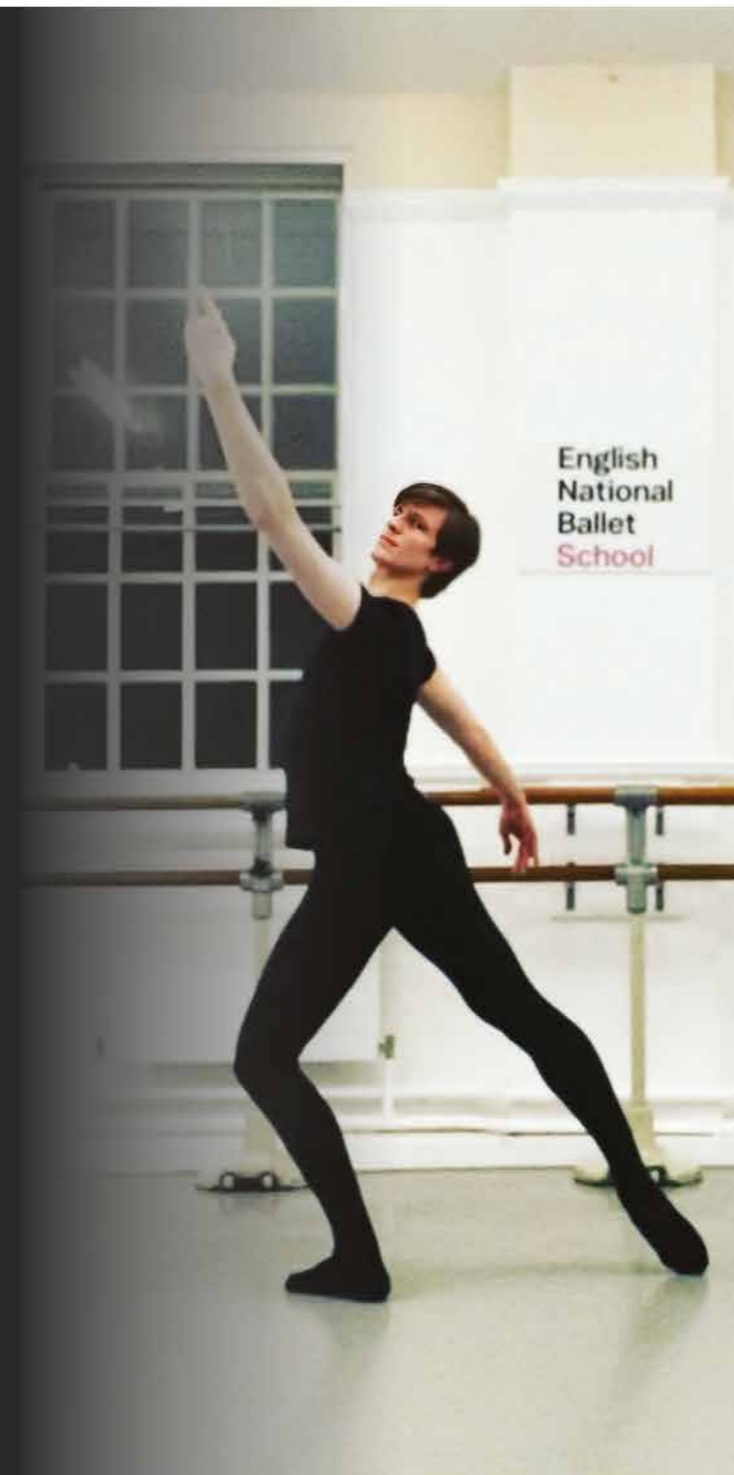
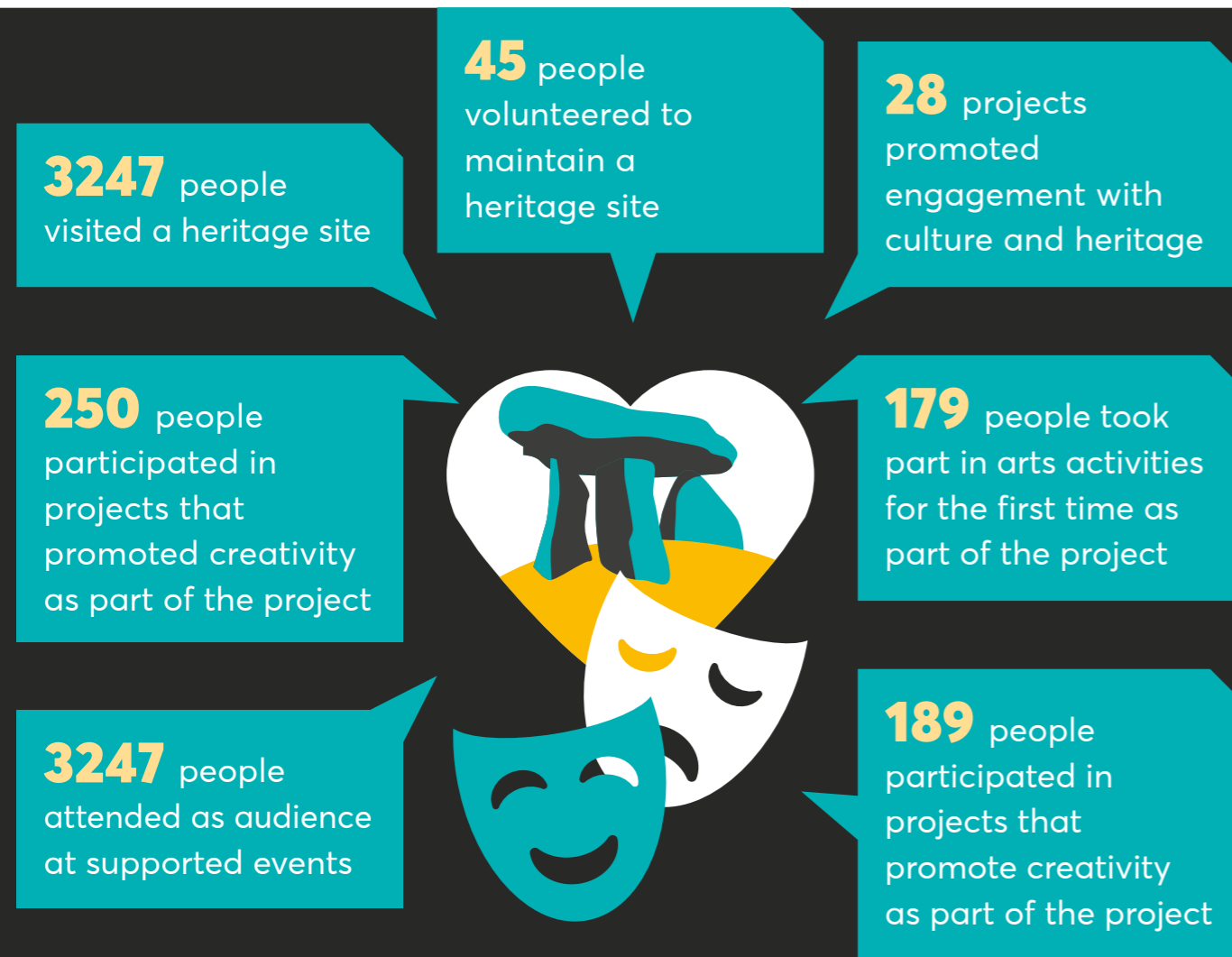
*“ We have over 12 years of evidence that our work has positive increases in wellbeing, resilience and outlook. Last year, out of our respondents, **93%** said they felt happier; **98%** said they had fun; **83%** said they felt fitter; and **86%** of young people expressed a desire to continue into surf club.”*

Fred Andrews, The Wave Project



Encouraging the **ARTS, CULTURE & HERITAGE**

Community benefit outcomes



Jamie Constance, Cornish ballet dancer

Jamie is an 18-year-old Cornish ballet dancer who was awarded a place on the English National Ballet School professional trainee program. This was a huge achievement, having previously trained only in Cornwall with his local teacher, Duchy Ballet and Truro College.

Jamie has been offered a contract with the Bayerisches Junior Ballet, one of the best junior ballet companies in the world. The contract includes a post for two years in Munich where Jamie will perform with the main company but also do his own performances in the opera house in Munich and other venues around Germany.

Jamie has received two grants from Young & Talented Cornwall totalling **£3,700** to provide accommodation and travel support while he is training. Young & Talented Cornwall, headed by Lord Lieutenant of Cornwall, Colonel Edward Bolitho OBE, helps those young individuals from Cornwall who have demonstrated an outstanding talent in a particular field – such as sport, the arts, science, voluntary service and enterprise – but are struggling to achieve their ambition or progress in their chosen career because of hardship or disability.

Jamie has played the piano from age 6 and the organ from 8 and, at 11, he was the organist at Padstow church.

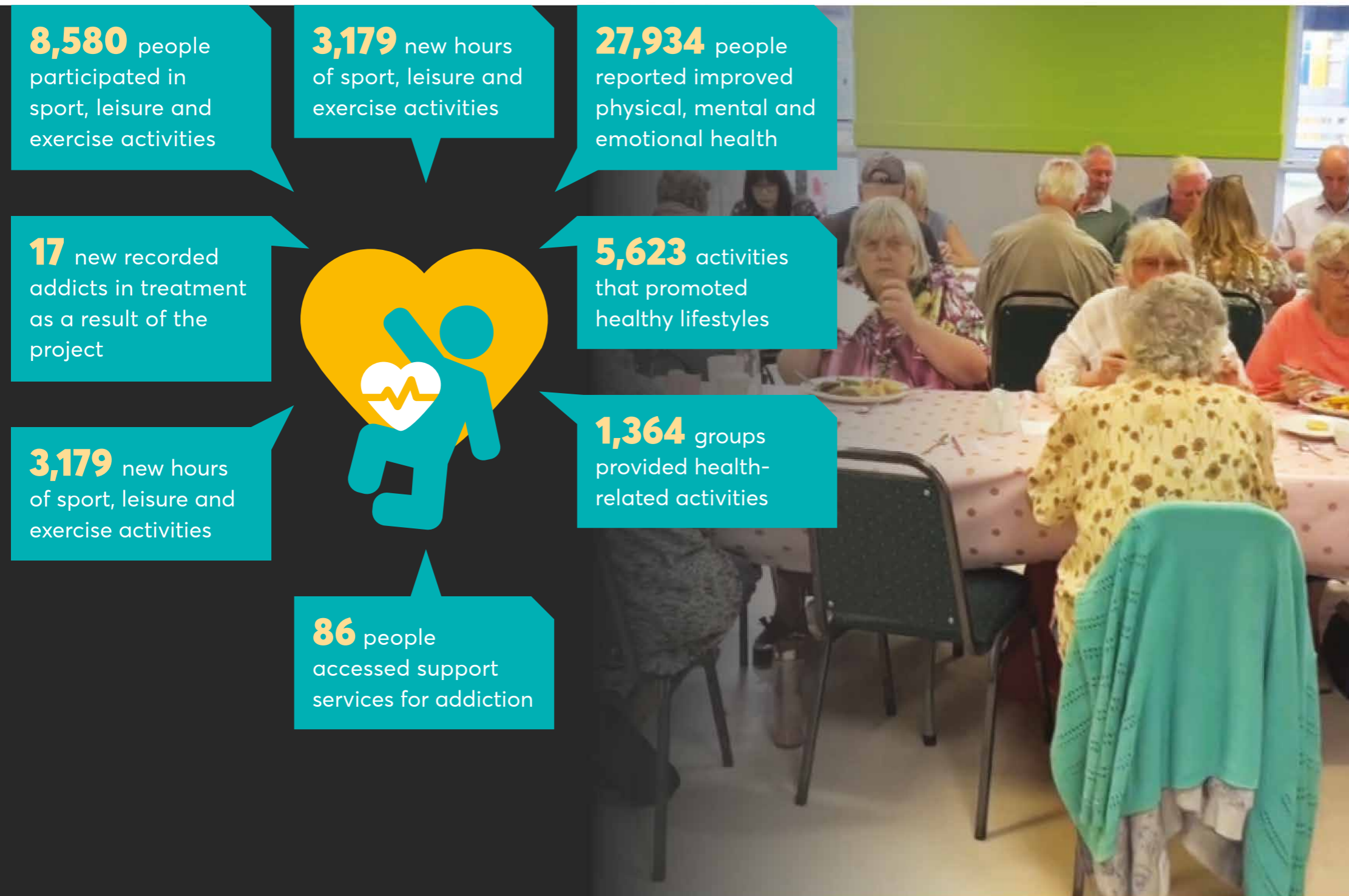
“ I am really thankful for my musical training as it has really helped my dance training and now more than ever at this professional level.”

Jamie Constance, ballet dancer



Increasing HEALTH & WELLBEING

Community benefit outcomes



The Oasis Centre

Oasis supports people St. Columb, St. Ervan, St. Eval, St. Mawgan and surrounding areas who are in a condition of need, hardship, distress, ill-health, disability or other disadvantage. Their services are for everyone but, in particular, they seek to help those who are feeling lonely and isolated, or who are housebound. Oasis runs wellbeing cafes, lunch clubs, home visiting services and a wide range of activities. The group were presented with the Queens Award for Voluntary Service in 2022.

CCF awarded Oasis a grant of **£5,000** from the Adult Social Care programme funded by Cornwall Council. The grant enabled Oasis to equip people still struggling from lockdown to cope with isolation in a constructive way. The project increased their outreach worker hours to focus on this group and also built on their programme in the Centre with more exercise, yoga, singing and drama. All activities were planned to build confidence and a sense of community.

Oasis reported that the grant has had a major impact on the lives of those people they helped. People were drawn back into the cafe environment and activities, increasing socialisation activities and building self-confidence.

“ I think it is fair to say that CCF grants have completely changed the lives of many we help and have given people a new purpose in life. By funding things that are so important – hot meals, exercise, simple projects etc people’s lives are changed.”

Pat Walton, Oasis Centre

A big thank you to our fundholders

Albert Van den Bergh/Hartley Fund – supports community projects generally in Newquay area

Alverton and Greenbank Hotels

Community Fund – supports voluntary groups in Truro, Falmouth and surrounding areas

Amaranth Fund – support projects on the Roseland and in the Falmouth and St Austell areas

Boyton Solar and Wind Farm

Community Fund – for community projects within Boyton parish

Bude Area Fund – this fund welcomes applications from projects in and around the Bude area

Business Club – awards to community projects across Cornwall

Bruce Davis Trust Fund – donor directed fund to support charities in Cornwall

Caledonia Investments

Charitable Foundation – to support community projects which address the inter-related issues of financial planning, debt management and financial education

Caradon Area Community Fund – legacy fund for community projects in South East Cornwall

Carew Pole Charitable Trust – to support projects, ideally to provide long-term impacts, that help people who are in need

Charles Reynolds Fund – for the relief of generational poverty and the relief of those in need by reason of youth, age, ill-health, disability, financial hardship or other disadvantage in Cornwall

Chief Constable's Fund – aims to protect vulnerable people, reduce crime and safeguard the neighbourhoods and communities of Cornwall

Commissioner's Community Grant

Scheme – funded by the Police and Crime Commissioner of Devon, Cornwall and the Isles of Scilly to support communities to provide diversionary activities from drugs-related anti-social behaviour

Community Fund – supports community groups and charities across Cornwall and the Isles of Scilly

Cornish Lithium Community Fund – will advance education, including supporting projects and training with a focus on earth sciences and history of Cornwall, including mining history

Cornwall Club – the CCF's philanthropy arm for those living outside Cornwall

Cornwall Crimebeat Fund – supports projects that help to reduce offending in Cornwall and the Isles of Scilly

Cornwall Emergency Fund – fund to provide emergency support to those affected by natural crisis

Cornwall Glass Fund – Cornwall Glass and Glazing Ltd fund to support community and social cohesion in Cornwall and the Isles of Scilly

Cornwall Women's Fund – aims to support groups working with women and/or girls to support them in gaining/maintaining employment

Cornwall's Social Enterprise Fund – to create employment, apprenticeships and training opportunities, and to improve skills to maximise trade, reinvestment and sustainability

Cost of Living Crisis Fund – support people who have been adversely impacted by the significant rise in the cost of living

Crisis Fund – provides grant assistance to individuals, families and communities in crisis situations

Denis Arbon Fund – donor directed fund

Duke of Cornwall's Marine &

Environmental Fund – focuses on stimulating widespread community education and engagement in marine environmental action and research across Cornwall

East Langford Solar Farm – community benefit fund for Kilkhampton, Launcells, Stratton and Morwenstow

Eddie and Vanessa George

Memorial Fund – helps groups train in information technology

Emily Bolitho Trust Fund – to support the wellbeing of individuals, especially those facing hardship

Francis Rowe Fund – to support community projects in North East Cornwall

Goonhilly Wind Farm Community

Fund – to support groups based in the TR12 postcode areas

Headland Hotel – to offer opportunities to grassroots community and voluntary groups in Newquay

Healeys Entrepreneurs Fund – to support young people to get their business idea off the ground

Howton Solar Farm Fund – supports community projects in the areas of Pillaton, Landrake & St Erney, St Mellion, St Dominick and Saltash

Jack Moon & Lors Fund – voluntary activities in Lostwithiel and St Winnow that help to maintain the traditions and culture of these communities

Karenzat Fund – to improve care for children and young people with special needs or disability

Lanherne Fund – aims to support community initiatives which focus on managing and improving the natural environment in Cornwall and the Isles of Scilly

Live Well Fund – supports projects that improve the physical health and wellbeing of people in their communities

Luxulyan Community Fund – to support community projects within the parish of Luxulyan

Manor Farm Solar – for the areas Charlestown, Grampound & Creed, St Ewe, St Mewan, St Dennis, St Stephen in-Brannel, Sticker, Treverbyn & central St Austell

Mining District Fund – donor directed fund for community projects in the old district of Kerrier

North Cornwall Area Fund – fund to attract donors within the North Cornwall area to donate to a specific area in which they are passionate

North Petherwin Community Fund – for community projects in the parish of North Petherwin

Papillon Fund – supports community projects within the parishes of St Thomas & South Petherwin

Patricbourne Fund – community projects across Cornwall through CCF's Community Fund

Penwith and Isles of Scilly Area Community Fund – fund for community projects in West Cornwall and the Isles of Scilly

Police Property Act Fund – supports communities to provide diversionary activities from drugs-related anti-social behaviour

Quinnian Fund – donor directed fund for community projects

Royston Leigh Fund – donor directed fund for community projects

Ruth Burden Community Trust – supports community projects within the parishes of Launceston South and Central, Lawhitton, South Petherwin and Lezant

Sedel-Collings Foundation – supports local voluntary sector and community groups in Cornwall and IOS which work to improve the lives of the people in their communities.

South West Enterprise Fund – to support young people to get their business idea off the ground

Surviving Winter – special appeal fund for vulnerable and other people experiencing fuel poverty

Tanner Phoenix Fund – donor-directed fund for community projects across Cornwall and the Isles of Scilly

Terence Beer Trust – aims to support disadvantaged children and young people

Tregothnan Foundation – donor directed fund

Trenouth Solar Farm – community benefit fund for four parishes in North Cornwall

Trewen Fund – community benefit fund for Trewen Parish

Trewithen Fund – this fund welcomes applications from projects enabling volunteers to assist young people who are not achieving their full potential

Tuppenny/China Clay Fund – for community projects within the China Clay area

Viscountess Boyd Charitable Trust – welcomes applications from South East Cornwall

Welcome Fund – provides financial support to refugees in Cornwall

Worval Foundation – to help provide opportunities for young, disadvantaged people who are on the edge of exclusion from school or are finding it hard to cope

Young and Talented – fund administered by the CCF on behalf of The Lord Lieutenant for talented young people in Cornwall and the Isles of Scilly

Young Carers Fund – provides support to young carers

Young Minds First – to support children and young people's emotional wellbeing

#iwill campaign – Social action for young people involving campaigning, fundraising and volunteering, all of which enables participants to make a positive difference in their communities

We couldn't do it without you

The generosity of our donors helps us support the brilliant community groups in Cornwall and the Isles of Scilly that are working to change lives.

How you can support Cornish communities through the Foundation

Set up a named Fund

A named fund is a cost-effective, long-term alternative to setting up an independent charitable trust. It provides donors with a full range of options depending on how involved they want to be in running their fund. The Foundation takes responsibility for the Fund's financial, administrative and charity reporting requirements.

Support an existing Fund

Make a one-off or regular contribution to an existing fund, which matches the donor's interests.

Transfer an existing charitable trust fund

Move existing trust assets to Cornwall Community Foundation to ensure the trust is actively managed by utilising our grant making, reporting and community expertise.

Leave a gift in your will

A legacy is the best opportunity to make a substantial gift that addresses an issue close to your interests. We will work with the donor's professional advisers to ensure the use of the fund fully meets their requirements.

Choose Cornwall Community Foundation to manage your Community Benefit Fund

The developers of new projects, for example, renewable projects and housing developments, often provide financial support for local communities. The Foundation can manage this fund – we currently manage and award grants from 12 renewable energy developments.

Become a Friend of the Foundation

Friends make an annual donation from as little as £25. The aggregated fund is then used to provide essential support to the Foundation and to local communities in Cornwall.



Join the Business Club

The Business Club is a group of like-minded businesses who take an active approach to social responsibility. Members' annual fees of £1,000 per business are pooled and grants are awarded to local community projects.



Join the Cornwall Club

The Cornwall Club is an opportunity for people who have an affinity with Cornwall, but who live or work elsewhere, to support communities in need in the county. Members of the Cornwall Club make an annual donation starting from £500.



Cornwall Community Foundation has the experience and expertise to provide advice on all forms of charitable giving. We work with donors' professional advisers to ensure giving is effective, efficient and meets all objectives.



For more information:

1 Sheers Barton · Lawhitton · Launceston · PL15 9NJ

office@cornwallfoundation.com · 01566 779333 · cornwallcommunityfoundation.com

If you are involved in a community group in your area, please contact us for more information about the grants we have available and please help us spread the word to other groups you may know.

Registered Charity No. 1099977. Company Limited by Guarantee. Registered in England No. 4816191

Printed on 100% recycled paper, carbon balanced and printed using vegetable-based inks



Jackie Stanley
ESTATE AGENTS

The Cornish agent for North Cornwall's finest properties...

1 North Quay, Padstow. PL28 8AF

01841 532555

sales@jackie-stanley.co.uk

www.jackie-stanley.co.uk



Jackie Stanley
ESTATE AGENTS



HARBOUR HOLIDAYS



The holiday cottage specialist

Coastal & country self-catering retreats

1 North Quay, Padstow. PL28 8AF

Call us direct 01841 533402

contact@harbourholidays.co.uk

www.harbourholidays.co.uk

