



Cornwall  
Community  
Foundation

together  
we're  
stronger

Bringing together donors  
who want to help Cornish  
communities with projects  
that **make a real difference**

Love  
Cornwall?  
**We do.**

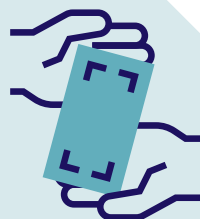
**OUR YEAR**

# 15 Years the story so far...

The Cornwall Community Foundation was founded in **2003**, by the late Lady Mary Holborow DCVO



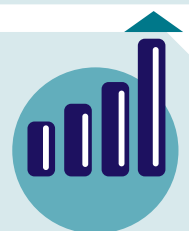
More than **£8 million** so far awarded to communities across Cornwall and the Isles of Scilly



More than **4,800** local community groups have been supported with grant funding



We now manage **61** funds for grant making



The endowed funds invested for long-term grant making have risen from **£29,000** in **2003** to **£4.76 million** in **2017**



The C100 Business Club, launched in **2008** has awarded **£300,000** in grants to date



Friends of the Foundation have raised **£245,000** since **2003**



## Contents

	Page
The story so far	1
The Chairman's Report	2
Fifteen years of supporting Cornish communities	3
Vital Signs	4
Grants	5
Examples	7
How you can give	9
From donor generosity to community support	10
Giving	11
Financial Summary	12
Funds	13
Our people	14

*“Community Foundations are vital contributors to building social capital. They also play a vital role by providing a platform that enables individuals and firms to invest in their local communities.”*

Mark Carney - Governor of the Bank of England.

We are grateful to M&G Investments for their support in the publication of this Review.

Front cover: *Citizenship For Life* (see page 7)



# The Chairman's Report



Dear Supporters,

Firstly, a big thank you from me for your continuing support for Cornwall Community Foundation. I am delighted to be able to tell you that it has been another successful year for the CCF with no less than **£575,000** being awarded to **417** community projects in all corners of Cornwall and the Isles of Scilly. We couldn't have achieved this without you, our loyal and generous friends, business supporters and fundholders.

Last year saw an important step forward for us, with the commissioning of a report into the changing social needs in Cornwall. The result is **Vital Signs®**, an invaluable research document highlighting deprivation and rural isolation as Cornwall's two most pressing issues. It will be used to inform at every step of the way, from philanthropic giving to grant making.

Grassroots organisations hold the key to improving the lives of the most disadvantaged in our county, and effective community philanthropy is essential to such groups. Thankfully, such philanthropy is alive and kicking in the UK. Community Foundations across Britain have collectively distributed one billion pounds to local charities to date. Making a real difference is what motivates us all.

We are very fortunate to have a Patron who cares so greatly. It was wonderful to welcome HRH The Duchess of Cornwall to our 15th anniversary celebrations this year. The sunny reception at the Duchy of Cornwall Nursery to mark the milestone is a memory for many of us to cherish. It is incredible to consider how the vision of that original Board of Trustees in 2003, chaired by the late Lady Mary Holborow DCVO, has enabled us to award more than £8 million in grants. Again this would simply not have been possible without our donors, trustees and supporters over our first 15 years.

I also want to say a heartfelt thank you to The Hon. Evelyn Boscawen DL who stepped down as Chairman of the Foundation in 2017, another hugely appreciative thank you to Oliver Baines OBE, CCF's former Chief Executive who retired in 2017 and congratulations to Tamas Haydu, who has been appointed our new Chief Executive.

Special mention must also go to our trustees, supporters, volunteers, friends, donors, fundholders, and our team in the Launceston office for the tireless work they all put in to making Cornwall a better place for all!

Let's all look forward to building on our successes and helping many more Cornish community organisations in the years ahead.

Yours faithfully

A handwritten signature in black ink, reading 'Jane Hartley'.

Jane Hartley DL - Chairman



# Fifteen years of supporting Cornish communities

Lady Mary Holborow visits  
Disability Cornwall on receipt  
of a CCF grant in 2007

In 1998, a small group of visionary people in Cornwall met to discuss ways of closing the all too apparent gap between struggling Cornish communities and readily available funds. Four years later, the result was the forming of the Cornwall Community Foundation.



By the end of its first full year, the CCF held **£307,000** in funds, including **£29,000** in endowment. To put this into context, we are currently responsible for **£5.63 million** in funds, including **£4.76 million** in endowment.

Since **2003**, more than **£8 million** has been granted to Cornish communities to date, supporting over **4,800** grassroots organisations.

This exciting growth is down to both the vision and stewardship of our voluntary Trustees, the hard work of our Foundation staff and the generosity and enthusiasm of our dedicated volunteers.

Fundamentally, though, it is the philanthropy of our donors and fundholders who truly enable us to help strengthen communities throughout Cornwall and the Isles of Scilly.

*“Without the generosity of our fund holders, donors and supporters, we would not have been able to make the difference we have to the people of Cornwall over our first 15 years. On behalf of our Trustees, I would like to say ‘thank you’.”*

**Jane Hartley** - Chairman

## Anniversary celebrations

We first raised a glass to our 15-year milestone at Trinity House, London in May with 175 guests of the Foundation's Cornwall Club.

Back home, Cornwall was at its sparkling best for the special Royal reception at the Duchy of Cornwall Nursery Lostwithiel in July. A sunny, colourful welcome awaited HRH The Duchess of Cornwall, our Patron since 2006.

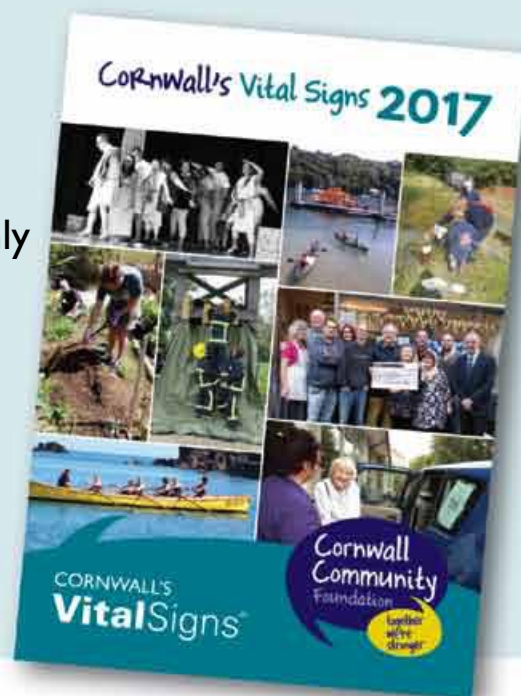


# VitalSigns®

In 2017 Cornwall Community Foundation commissioned research to properly and thoroughly take the pulse of Cornish communities.

Wages, transport, housing, the arts – how healthy is Cornwall?

Vital Signs®, the resulting report, is now an invaluable tool in informing our philanthropists and guiding us in our grant making.



**42% of employees** in North Cornwall and **39%** in South East Cornwall earn below the living wage

**82% of respondents** say public transport is insufficient

More than **40% of children** in Falmouth Penwerris ward and Camelford ward live in poverty

The **average house price** in Cornwall is **12 times** the average Cornish salary

**80% of respondents** say there is not enough local, affordable local housing



**99,235 people**, **22%** of the working age population in Cornwall, have no qualifications

**87% of residents** attended arts and heritage events in 2017 but transport is often an issue

**44% of Cornish residents** live in rural areas, compared to **11% in England** making access to services and employment difficult

Cornwall's living environment has the highest rank, but climate change is a growing concern

**4,500 voluntary, community and social enterprise organisations** in Cornwall and the Isles of Scilly are ready and willing for action



**Tamas Haydu**, Chief Executive:

*"Our **Vital Signs®** research highlights the most pressing issues in Cornwall and the Isles of Scilly. With this knowledge we can focus more on the areas that need our help the most. In the last 12 months we have invested more grants in helping disadvantaged people in our communities. Cornwall is a wonderful place to live and we should all be able to enjoy what it can offer."*

Copies of Cornwall **Vital Signs®** are available to download from our website [cornwallcommunityfoundation.com](http://cornwallcommunityfoundation.com) or by calling 01566 779333.

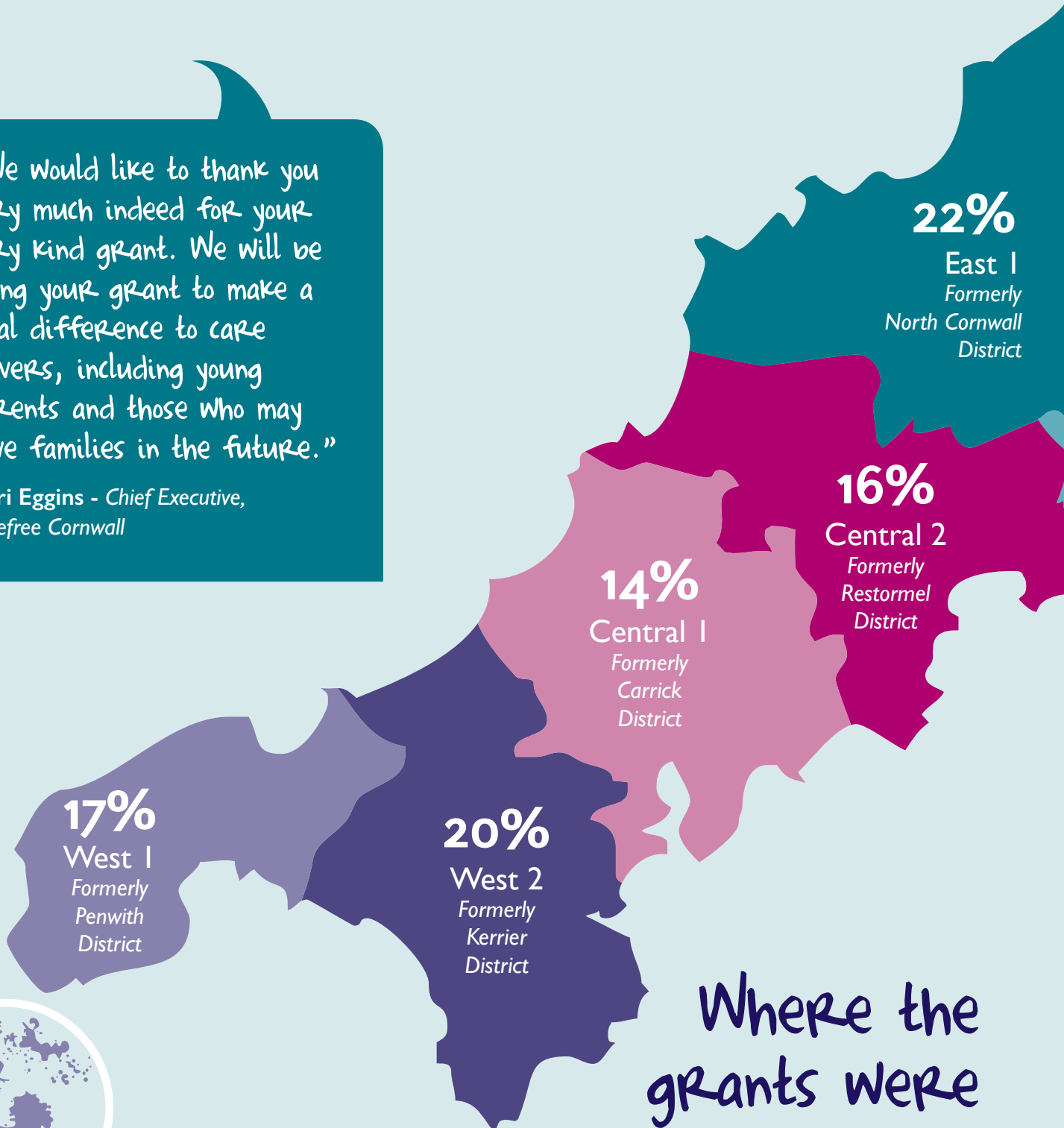
# Grants

In 2017, we invested **£575,000** in **417** projects right across Cornwall and the Isles of Scilly with an average grant award of **£1,378**.

Our grants leveraged a further **£2,450,000** investment for the projects we supported from other funding sources.

"We would like to thank you very much indeed for your very kind grant. We will be using your grant to make a real difference to care leavers, including young parents and those who may have families in the future."

Mari Eggins - Chief Executive,  
Carefree Cornwall



Where the  
grants were  
invested

All the money donated to Cornwall Community Foundation stays in Cornwall and the Isles of Scilly.

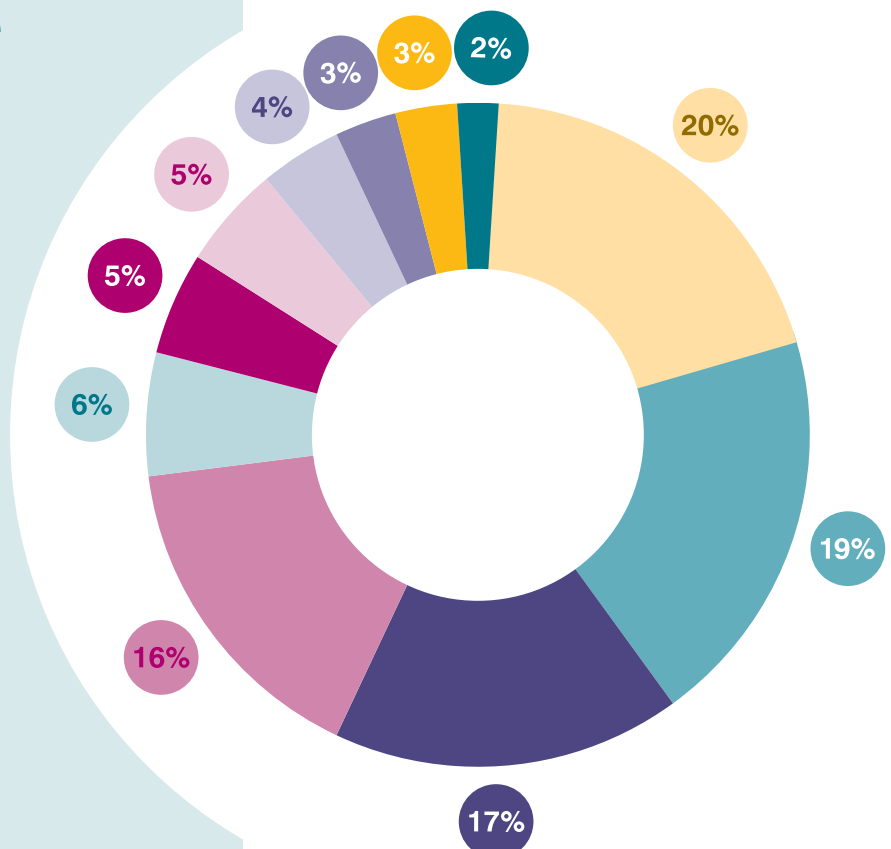
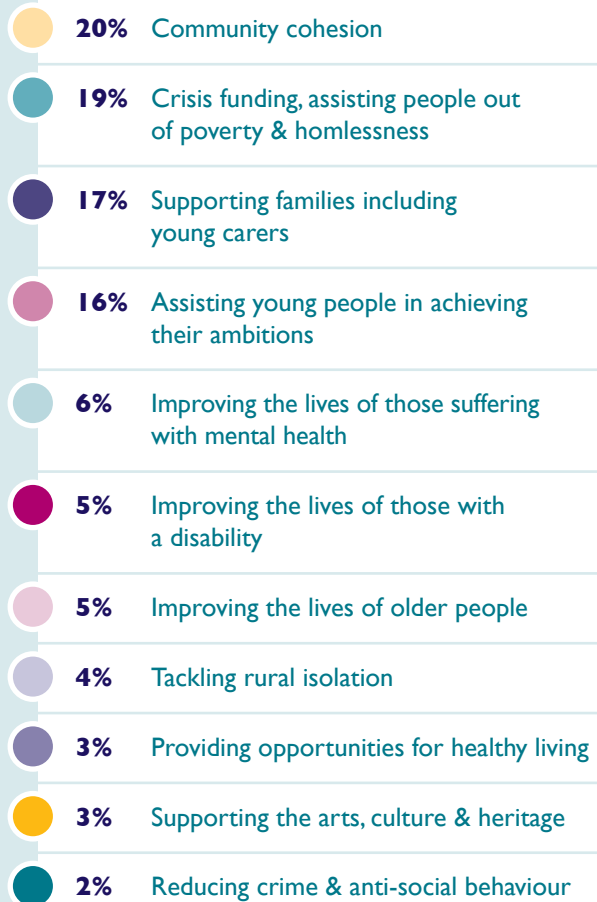
11%

East 2  
Formerly  
Caradon  
District

"Cornwall Community Foundation's grants have enriched the lives of many of our members by giving Exercising For Mobility the opportunity to provide new experiences."

Janet McCulley -  
Exercising for Mobility

## How the grants were invested





# Examples



## Aspiration

Citizenship For Life CIC works with challenged young people to build aspiration, emotional resilience and citizenship. The #iwill Fund provided **£4,800** for five invaluable programme days, and since 2015, Citizens for Life CIC has helped transform more than **45** vulnerable lives.

## Exercise & togetherness

Social exercising is a proven boost for health, especially for the elderly, the disabled or those with long term health conditions. Exercising For Mobility in Bude, North Cornwall, boasts **200** members with several nonagenarians among them. A grant of **£3,300** from the Karenza Fund helped bring together three generations of local families for regular weekly exercise.



## Essential food

Foodbanks across Cornwall are at the forefront of helping people in crisis, providing emergency meals and often other support services such as computer access and debt advice. The C100 Business Club awarded **£2,800** to Liskeard and Looe Foodbank for better equipment with the Foundation awarding grants to **12** other Cornish foodbanks over the year.



## Positive Parenting

When you are young and vulnerable, parenting is a daunting task. The Wild Young Parents' Project offers the under 23s support with mental, sexual and physical health, diet, domestic abuse, positive family relations, confidence, careers and education. Cornwall Community Foundation has supported Wild with **£5,020** from the #iwill Programme, the Surviving Winter Appeal and the Crisis Fund.



## Achieving potential

Charlotte Hill, a promising 15-year-old Cornish modern pentathlete, is currently ranked 2nd in the UK for the Under 16 Biathlon, as well as being the British Modern Pentathlon Champion for Under 17s. The Lord Lieutenant's Fund For Youth, which provides support to particularly gifted under 23 year-olds in the county who need financial help to achieve their potential, awarded Charlotte **£1,000** to support her training and competition.



## Going places

Cornwall is a rural county where many elderly, frail and vulnerable people need help getting to the GP or hospital. Mullion Health Community Cars now provide a vital and comfortable door-to-door service, helped by the Goonhilly Wind Farm Community Fund who awarded them **£975** to assist with service set-up costs.



# Giving

## Set up a named fund

A named fund is a cost-effective, long-term alternative to setting up an independent charitable trust. It provides donors with a full range of options depending on how involved they want to be in running their fund. The Foundation takes responsibility for the fund's financial, administrative and charity reporting requirements.

## Support an existing fund

Make a one-off or regular contribution to an existing fund which matches the donor's interests.

## Transfer an existing charitable trust fund

Move existing trust assets to Cornwall Community Foundation to ensure the trust is actively managed by utilising our grant making, reporting and community expertise.

## Choose Cornwall Community Foundation to manage your community benefit fund

The developers of new projects e.g. renewable projects and housing developments, often provide financial support for local communities. The Foundation can manage this fund - we currently manage and award grants from 13 renewable energy developments.

Cornwall Community Foundation has the experience and expertise to provide advice on all forms of charitable giving. We work with donors' professional advisers to ensure giving is effective, efficient and meets all objectives.

## Leave a gift in your will

A legacy is the best opportunity to make a substantial gift that addresses an issue close to your interests. We will work with your professional advisers to ensure the use of the fund fully meets your requirements.

## Become a Friend of the Foundation

Friends make an annual donation of as little as £25. The aggregated fund is then used to provide essential support to the Foundation and to local communities in Cornwall.

## Join your business to the Business Club

The Business Club is a group of like-minded businesses who take an active approach to social responsibility. Business Club Members' annual fees of £1,000 per business are pooled and grants awarded to local community projects.

## Join the Cornwall Club

The Cornwall Club is an opportunity for people who have an affinity with Cornwall but who live or work elsewhere to support communities in need in the county. Members of the Cornwall Club make an annual donation starting from £500.

## Support the Second Home Owners Scheme

An easy way for second home owners to help Cornish communities by contributing the equivalent of one week's rent each year to the work of Foundation.

# From donor generosity to community investment

## Philanthropic Giving



### ENDOWED FUNDS

Named Funds

Existing area or needs based Funds

Transferred Trust Funds

Legacies

Community Benefit Funds

### IMMEDIATE IMPACT FUNDS

Business Club

Friends

Cornwall Club

Second Home Owners

Special Appeals

### FUNDS AVAILABLE FOR GRANT-AWARDING



Grant availability publicised to Cornish community groups by the Foundation team

### Application for grant received from the community group

Grants team complete due diligence and assess against the fund criteria

Application and assessment presented to the volunteer grant panel for decision

### APPROVED PROJECTS NOTIFIED AND RECEIVE FUNDING

Project outcomes and impact monitored by the grants team





# Giving through Cornwall Community Foundation

The generosity of our donors helps us support the community groups working to change lives. The financial support the Foundation offers is vital to strengthening Cornish communities.

**We make your charitable giving simple and fun.**

## We love Cornwall

Our fund-holders, donors, staff and volunteers are genuinely committed to make Cornwall and the Isles of Scilly a better place to live and work

## We understand Cornwall

We base our grant making on knowledge and evidence, commissioning our own Vital Signs report® to ensure we understand Cornwall's priorities

### Alverne Bolitho - Fundholder

The Emily Bolitho Trust:

*“The Emily Bolitho Trust has worked with the Cornwall Community Foundation for over five years and we are indebted to the expertise, local knowledge and administrative efficiencies that it provides. The CCF has undoubtedly helped in ensuring that more grants are received by more people who are most in need of help throughout West Penwith.”*

## We ensure your giving is used effectively

Our professional grant making team guarantees that applications are assessed, administered and monitored in accordance with fund criteria.

## We offer professional philanthropy advice

Working with individuals, families and businesses, together with their professional advisers, we ensure your giving is tax efficient and delivers maximum impact.

### Mark Mitchell - Chairman

Cornwall Glass and Fundholder:

*“In our ruby celebration year in 2018, we continue to work closely with the CCF. To reach out to new recipients we held mini-roadshows. This innovative initiative has been marvellously supported, promoted and administered by CCF enabling us to grant to more than 40 new groups and organisations this year alone.”*

## We make giving easy and convenient

The Foundation takes responsibility for Charity Commission registration, reporting and auditing. A named fund can be set up after one meeting rather than waiting several months to register as a charitable trust.

## We offer donors flexible options

This ensures funds are directed as fund-holders require, with regular progress reports provided. Fundholders can be as directly involved in grant making as they wish.

## We will be here forever

Endowed funds mean grant support for Cornish communities is guaranteed in perpetuity.

### Carey Green - Head of Administration,

REG Power Management Limited – Goonhilly Wind Farm Community Benefit Fund:

*“REG is pleased to be working with Cornwall Community Foundation (CCF) on the administration of two of our community funds. CCF provide an exceptional service, dealing with the fund administration competently and professionally and REG looks forward to working with CCF for many years to come.”*



# Financial Summary<sup>1</sup>

for the year ending 31 December 2017

	2017 Total £'000	2016 Total £'000
<b>Income</b>		
<i>Donations and legacies</i>	115	66
<i>Income for endowment<sup>2</sup> for future grant making</i>	554	256
<i>Income for current grant making</i>	661	729
<i>Income from fund raising events</i>	15	10
<i>Investment Income</i>	196	157
<b>Total income</b>	<b>1,541</b>	<b>1,218</b>
<b>Expenditure</b>		
<i>Operating costs including salaries</i>	242	216
<i>Expenditure on raising funds</i>	36	21
<b>Total expenditure</b>	<b>278</b>	<b>237</b>
<i>Net investments gains/(losses)</i>	274	301
<b>Net income for the year</b>	<b>1,537</b>	<b>1,282</b>
<i>Grants awarded</i>	575	633
<b>Net income added to funds for future grant making</b>	<b>962</b>	<b>649</b>
<b>Balance Sheet</b> as at 31 December 2017		
<i>Investments</i>	5,041	4,071
<i>Current assets</i>	592	599
<b>Total Assets</b>	<b>5,633</b>	<b>4,670</b>
<b>Funds of the charity</b>		
<i>Endowment funds</i>	4,716	3,773
<i>Restricted funds</i>	678	681
<i>Unrestricted funds</i>	239	216
<b>Total charity funds</b>	<b>5,633</b>	<b>4,670</b>

<sup>1</sup> detailed, audited accounts are available by visiting our website [www.cornwallcommunityfoundation.com](http://www.cornwallcommunityfoundation.com) or a copy can be obtained from **CCF**, Suite 1, Sheers Barton, Lawhitton, Launceston PL15 9NJ,

<sup>2</sup> an endowed fund is a investment fund where withdrawals are made for grant making based on the fund agreement

Company Limited by guarantee No 04816191. Charity No 1099977

The CCF is affiliated to UK Community Foundations (UKCF) to standards endorsed by the Charity Commission.

Company limited by guarantee. Charity no 1099977. Company no 04816191.



**UK COMMUNITY  
FOUNDATIONS**  
GIVING FOR LOCAL GOOD

# Funds Managed by Cornwall Community Foundation

## Named Funds

Albert Van Den Bergh/  
Jane Hartley Fund  
Amaranth Fund  
Benefitting Older People  
Bosvigo School Fund  
Bright Futures Fund  
Bristol & West Fund  
Bude Fund  
Bruce Davis Trust Fund  
Caradon Area Community Fund  
China Clay Area Community Fund  
Clare Milne Trust  
Community Fund  
Cornwall 100 Club  
Cornwall Club  
Cornwall Crimebeat Fund  
Cornwall Glass and Glazing Fund  
Crisis Fund  
Dennis Arbon Trust Fund  
Duke of Cornwall Benevolent Fund  
Eddie and Vanessa George Fund  
Emily Bolitho Trust  
Friends of Cornwall  
Community Foundation  
Jack Moon and Lors Trust  
Lord Lieutenant's Fund for Youth  
Lord St Levan Fund  
Mining District Fund  
North Cornwall Fund  
Patricxbourne Fund  
Penwith & Isles of Scilly  
Area Community Fund  
Quinnian Fund  
Royston Leigh Fund  
Second Home Owners Scheme  
Mental Health Fund for  
Children and Young People  
Tregothnan Foundation  
Trewithen Fund  
Tuppenny Fund  
Worval Foundation

## Renewable Energy Funds

Boyton Solar & Wind Farms  
Community Fund  
East Langford Solar Farm  
Goonhilly Wind Farm Community  
Fund  
High Down Wind Farm  
Howton Solar Farm  
Luxulyan Community Benefit Fund  
Manor Solar Farm  
North Petherwin Community Fund  
Papillion Fund  
Ruth Burden Community  
Trust Fund  
Trenouth Solar Farm  
Trewen Fund  
United Downs Geothermal  
Community Fund

## Trust Appeals

BBC Radio Cornwall  
Building a Stronger Britain  
Together Fund  
Comic Relief – Core Strength Fund  
Comic Relief Community Cash  
Cornwall Emergency Fund  
#iwill Fund  
Resettlement Fund  
Royal London Fund  
Tampon Tax Community Fund  
Wellbeing and Prevention  
Winter Fuel Payments Fund







# our people

## Patron

HRH The Duchess of Cornwall

## President

Colonel Edward Bolitho OBE

## Vice President

The Rt Revd Timothy Thornton, Bishop of Lambeth

## Staff Team

Mr Tamas Haydu, *Chief Executive*

Mrs Jo Riley, *Philanthropy Director*

Mr Jeremy Ward, *Development Director*

Mrs Kirsty Philpott, *Grants Manager*

Mrs Donna Wheadon, *Grants Officer*

Miss Angie Springall, *Administrative Officer*

Mrs Sarah Holdaway, *Grants Administrator*

Ms Tammy Inkpen, *Finance Manager*

## Board of Trustees

Mrs Jane Hartley DL (*Chairman*)

Mr Timothy Smith FCA (*Vice Chairman*)

Mr Toby Ashworth

The Hon Evelyn Boscawen DL

Mr Kim Conchie

Mr Jonathan Cunliffe

Mr John Ede MBE

Mr Stamford Galsworthy

Mrs Deborah Hinton OBE

Mrs Natercia Hughes (*Treasurer*)

Mrs Nicola Marquis

Mrs Emma Mantle

Mr Ian Taylor

Mr Thomas Van Oss

Miss Daphne Skinnard DL

Mr James Williams DL

## Thank you to our volunteers:

We wouldn't be able to deliver our service without the help of our dedicated team of volunteers.

Special thanks go to Caroline Dudley OBE, Oliver Baines OBE, Ivor Bowditch, Anna Corbett, Paul Masters, Rev Andrew Yates, Sue Guard, Verity Cunliffe, Becca Gregson, Ellie Michell, Patrick Polglase, Richard Trant, Meg Weir, Brush Winfrey, Ellen Winsor, Mary Tyler, Sarah FitzGerald, Penny Kitson, Jane Trehair and to all our panel members.



# IM&GINE

## FEELING IN CONTROL OF YOUR CHARITY'S FINANCIAL FUTURE

We understand that charities have to balance their income requirements with the need to protect the value of their assets. That's why Charifund offers a well-diversified, UK-focused portfolio that aims to limit the effects of volatility and inflation over the long term, while also seeking to pay a regular income (totalling over £50 million in both 2016 and 2017\*).

It's backed by nearly 60 years' experience in the sector and all the resources that come from being one of the largest asset managers in the UK.

We are delighted to work with Cornwall Community Foundation in support of this publication.

Past performance is not a guide to future performance. The value of investments and the income from them will fluctuate. This will cause the fund price to fall as well as rise. There is no guarantee that the fund objective will be achieved and you may not get back the original amount you invested.



Contact our Charity Team:

Richard Macey 020 7548 3731

James Potter 020 7548 3882

Email [charities@mandg.co.uk](mailto:charities@mandg.co.uk)

Visit [www.mandg.co.uk/charities](http://www.mandg.co.uk/charities)